

Green Story:

Environmental impact and sustainability specifications of Brentano Green fabrics

Product Name: **Galaxy- 3987**

Contents: 100% Polyurethane Face, 65% Polyurethane, 35% Polyester

Usage: Leather alternative, Upholstery, Panel, Eco-fabric

- 1) Our polyurethane is biodegradable.
- 2) Naturally soft and flexible, polyurethane does not require the solvents used to soften PVC or leather.
- 3) Polyurethane faux leather offers a greener alternative to vinyl (PVC). PVC contains chloride and is not biodegradable. It leaches toxic additives in landfills and emits carcinogenic dioxin when incinerated.
- 4) Polyurethane faux leather offers a greener alternative to leather. Leather production is a chemical-laden process, including the use of heavy metals.
- 5) General cleaning of polyurethane surfaces often requires only soap and water.
- 6) **Galaxy** is manufactured in facilities that are conscientious of the green movement. A variety of policies are in place, such as air and water pollution decrement systems, as well as reduction and reuse of solvents.
- 7) **Galaxy** is manufactured in an ISO 14001 certified facility. ISO 14001 creates an Environmental Management System (EMS) to identify and achieve environmental goals.

For more information, please visit www.iso.org

- 8) All pigments and chemicals used in the facilities comply with EPA guidance.

Galaxy is part of our [Ultra Friendly Series](#).

Brentano's Ultra Friendly Series of polyurethane faux leathers are made using a patented "dry" process. Compared to the traditional "wet" process, the Ultra Friendly Series has the following benefits:

- 1) It consumes 0.1% of solvent, almost none.
- 2) It requires 1/3 of the energy to produce.
- 3) In addition to the green benefits, the Ultra Friendly Series is tested to be extremely strong in abrasion and exhibits superior hydrolysis performance.

COLOR OPTIONS:



3987-01 3987-02



3987-03 3987-04



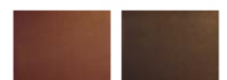
3987-05 3987-06



3987-07 3987-08



3987-09 3987-10



3987-11 3987-12



3987-13